

# TIEger<sup>®</sup> Auto-Tie Balers

■ *Featuring the Exclusive TIEger – Gear Driven Tying System*

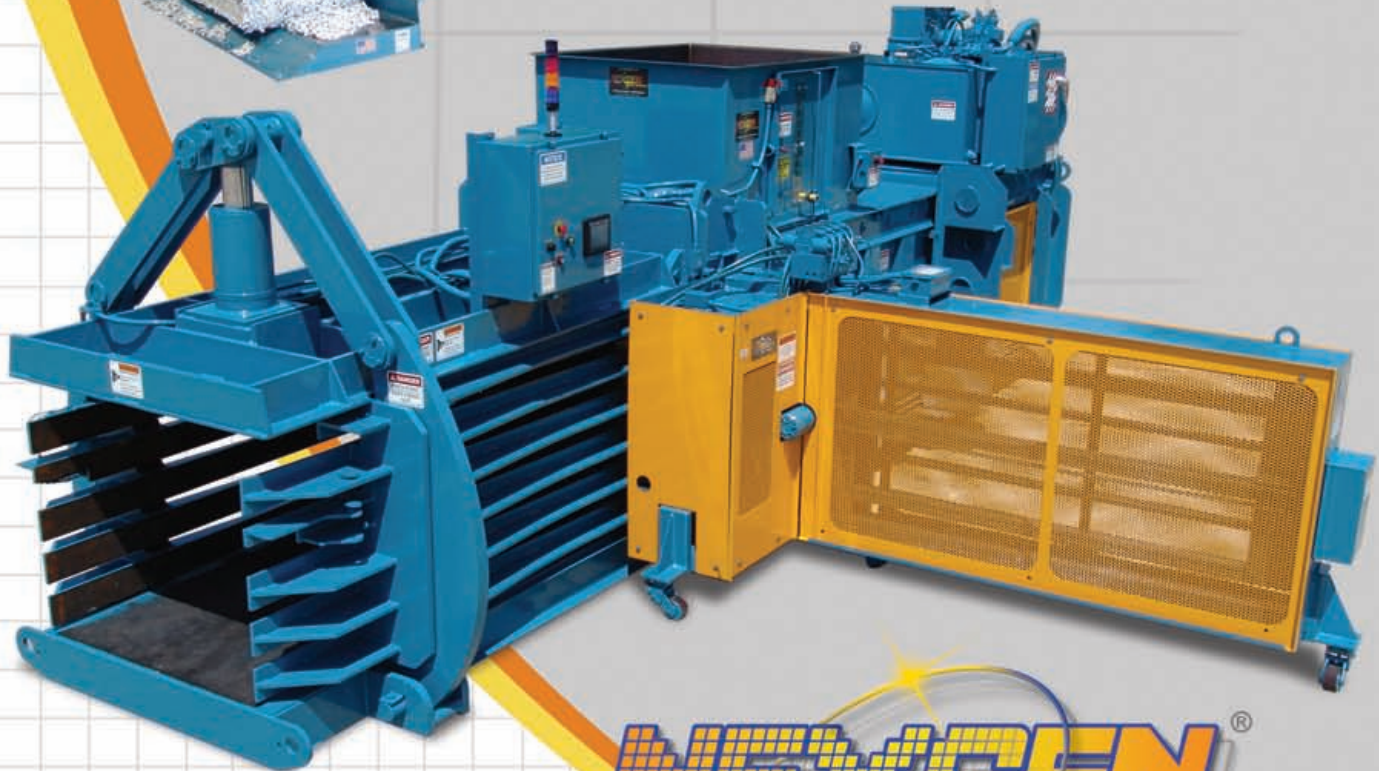


## **PC-Baler & Non-Shear Models:**

PC-32 & PC-44; Wide Clearance (WC)  
& Extra Wide Clearance (EWC)

## **Shear Models:**

Narrow Shear (NS); Wide Shear (WS);  
& Extra Wide Shear (EWS) Balers



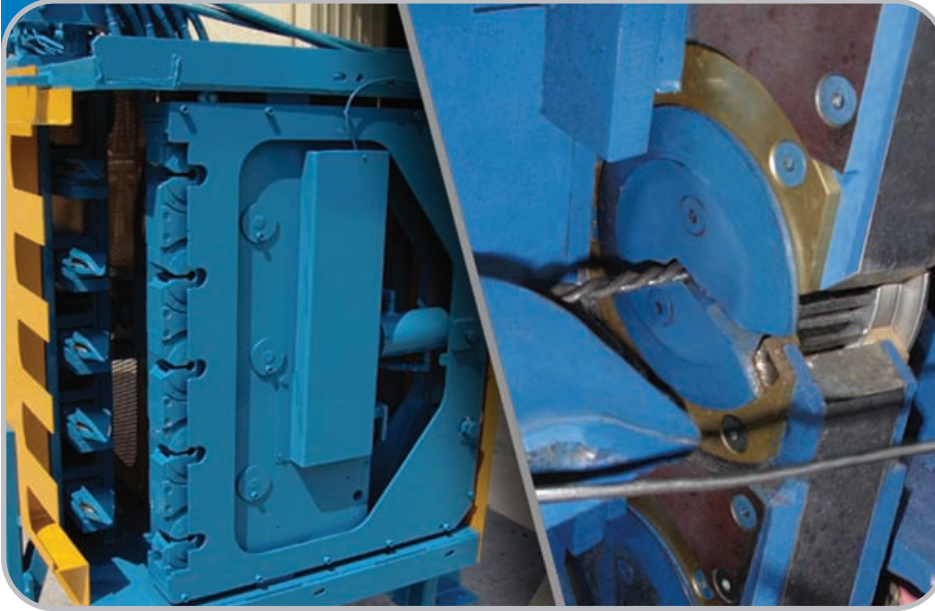
Contact **NEXGEN<sup>®</sup>** for specifications  
on the **TIEger<sup>®</sup>** Auto-Tie Balers

**NEXGEN<sup>®</sup>**  
BALING SYSTEMS



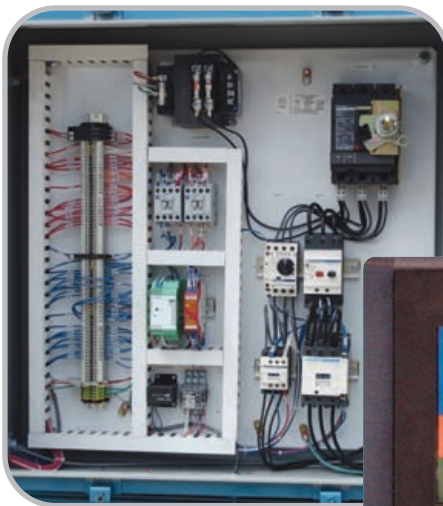
# Gear Power...

## Gear Driven Tying System



**The NEXGEN Line of TIEger Auto-Tie Balers** are precision built by our manufacturing specialists and feature one of the most exciting new technologies in more than 30 years: the **TIEger Tying System** (patent no. 7,389,724). This tier uses highly efficient gear twisters, which

means there are no twister hooks and **NO pigtails**. This amounts to more than **10% reduction in wire consumption and related costs!** The gear twisters and inserter needles are hydraulically driven and wire is dispensed directly from our unique box holders. Hydraulic wire positioners precisely align the wires for pick-up by the inserter needles making the **TIEger the most reliable tier on the market.**



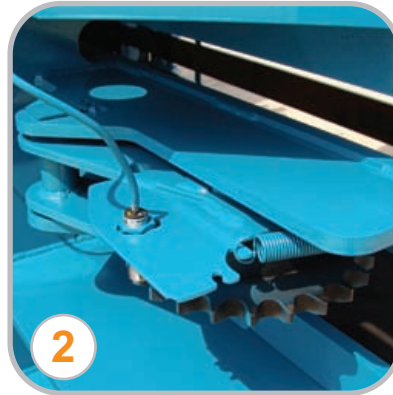
**NEXGEN Auto-Tie Balers** are designed for high productivity and ease of use with state-of-the-art electronics such as the Allen-Bradley MicroLogix 1500 PLC and **Maestro**<sup>®</sup> color touch-screen operator interface. From



this interface, the operator can control a variety of baler functions such as auto and manual modes, bale settings, system pressures, bale length, and perform computerized diagnostics. The main panel box features IEC controls.



# Loaded with Features & Benefits



NS,WS & EWS Series only

1. Single cylinder bale tensioning system with linkage bars provides up to 1 million pounds of extrusion force!
2. Spring loaded counter wheel, located on the side of the baler, sends a digital reading to the operator interface.
3. Wire positioners on twister cabinet side for precise twister alignment and no missed wire pick-ups.
4. TEFC motor with quiet running pumping system.
5. Spring loaded retainer locks, adjustable wire positioners, and adjustable inserter needle positioners.
6. The in-feed hopper has a gasketed access door and viewing windows on both sides of the hopper. Infrareds are adjustable the entire height of the hopper door window.
7. Wear resistant, replaceable Nylatron liners on the ram sides. 500 Brinell steel liners on the floor and ram bottom. Oversized ram hold-down bars are adjustable from the exterior of the machine.
8. Serrated body and ram shear blades are shimable and replaceable (not available on PC-Series, WC or EWC models).

## Standard Features

### Structural & Mechanical

- Single cylinder tension system which leverages and generates force on all four sides.
- All pivot points have solid steel bushings and grease fittings.
- Adjustable Nylatron inserter needle positioners (on the side opposite the tire) ensures correct needle position every time.
- Inserter and twister assembly cabinet pivots for easy access and maintenance.
- Inserters and gear twisters are driven by hydraulic motors.
- Hydraulic wire positioners (tier side of baler).
- Shear blades are replaceable and shimmable (NS,WS & EWS only).
- Dust is controlled through the use of Nylatron shims and special programming.
- 500 Brinell steel liners on the floor and ram bottom.
- Chute type feed hopper with gasketed access door with viewing windows on both sides of the baler.
- Oversized ram hold-down bars are adjustable from the exterior of the machine.
- Heavy-duty, spring-loaded retainer locks.
- Wire box holders make loading quick and easy with no adjustment required. Ceramic wire guides and adjustable wire rollers.
- Optional wire run-out system available.

### Electrical & Hydraulic

- Spring loaded counter wheel, located on the side of the baler, sends a digital bale length reading to the operator interface.
- **Maestro**® color touch screen operator interface with Allen-Bradley MicroLogix 1500 PLC; provides many functions such as diagnostics, bale set-up, bale length, system pressures, etc.
- Infrareds are adjustable the entire height of the hopper door window.
- **UL & CUL** listed control systems.
- Start-up alarm and beacon.
- 460V / 3-Phase / 60 Hz high efficiency power unit.
- Powerpacks up to 150HP and many dual motor units are available.
- Lockable main circuit breaker.
- Low oil shutdown switch.
- High oil temperature shutdown switch.
- Oil shut-off valve.
- Quiet running pumping system.
- Electrically actuated regen hydraulic system.
- Current and pressure transducers are standard.
- Air-to-Oil cooler.
- 150 to 600 gallon hydraulic oil reservoir (up to 200 gallons shipped with unit).
- Factory start-up; standard **NEXGEN** warranty; standard paint colors.

Authorized Distributor:



P.O. Box 1798  
Vernon, AL 35592-1798 USA  
(205) 695-9105 • fax (205) 695-7250

**1-800-633-8974**

Visit us on-line at: [NEXGENbalers.com](http://NEXGENbalers.com)

Pictures in this literature are illustrative only. Specifications are subject to change without notice in order to accommodate improvements to the equipment. Certified in compliance with ANSI Regulation Z245.5 and all OSHA standards. Products must be used with safe practice and in accordance with said regulations and standards.