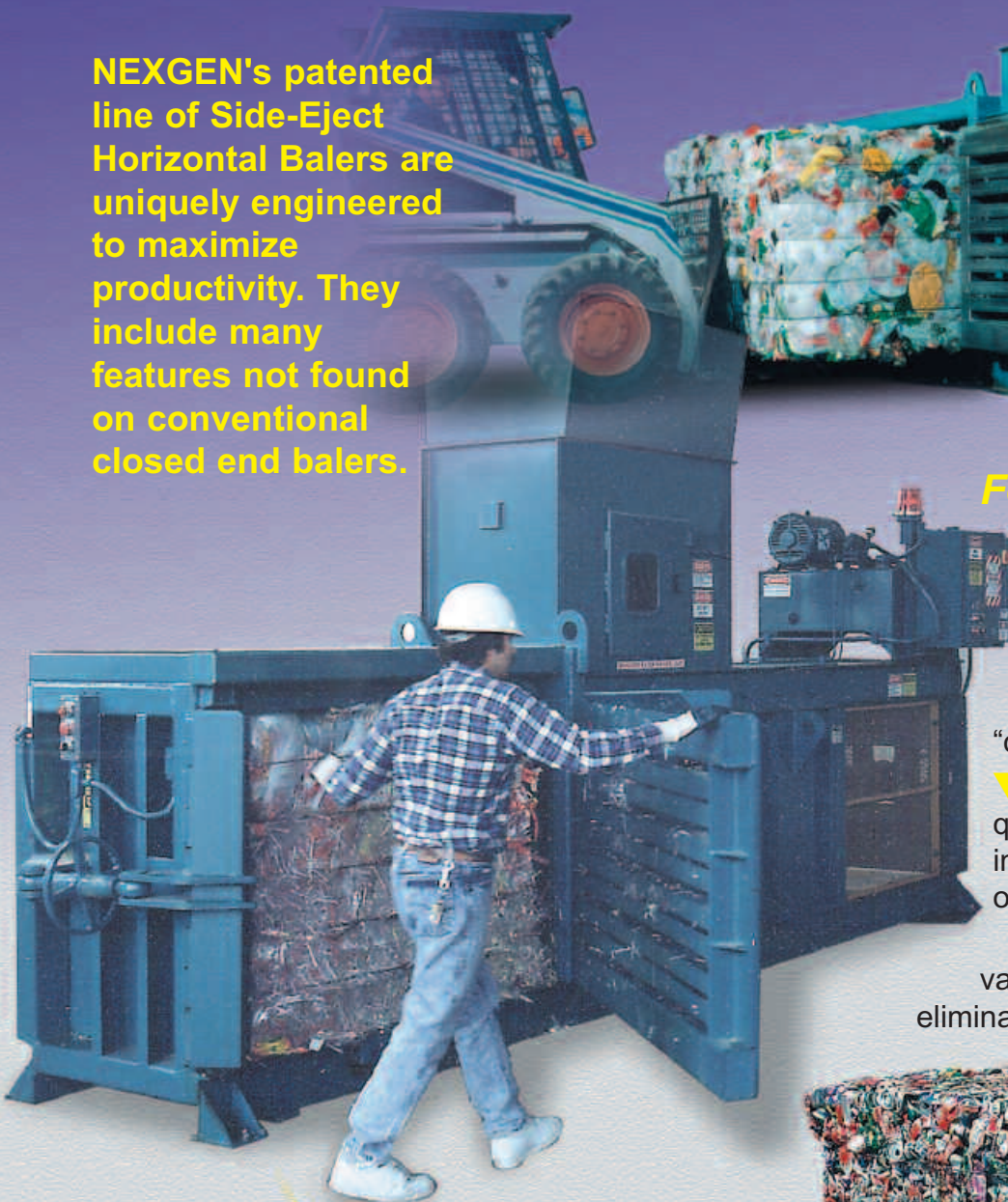


# **Side-Eject** Manual-Tie

# **Horizontal Baler**

NEXGEN's patented line of Side-Eject Horizontal Balers are uniquely engineered to maximize productivity. They include many features not found on conventional closed end balers.



## **Features & Benefits**

- ▼ Switch recyclables without contamination and maximize the value of your product.
- ▼ Minimize spillage between bales and reduce the need to "double handle" materials.
- ▼ Remove finished bales quickly and automatically to improve efficiency of your operation.
- ▼ Front bale tie off saves valuable floor space and eliminates trips behind the baler.





# NEXGEN'S Side-Eject Balers offer ...

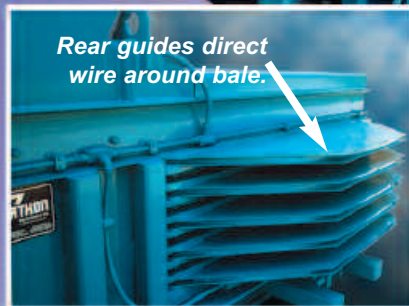
- ▼ Increased product value by eliminating contamination between bales as the operator changes materials being processed.
- ▼ Maximum bale weights with Nexgen's Bale Made Indicator which signals the bale is finished. No time consuming "flag Pole" or manual measuring device to compromise bale quality.
- ▼ Eliminates spillage commonly found with conventional balers. No need to "double handle" materials being processed.
- ▼ Remove each bale from bale chamber quickly and easily with Nexgen's \*patented Side-Eject feature and Bale Server Island. Unlike conventional balers that require an operator and forklift to free the bale from the end of the bale chamber, the Nexgen Side-Eject design provides positive and complete bale ejection every time.



The retracting bale server island allows bale to be easily removed with forklift.



Operator inserting wire ties.



Rear guides direct wire around bale.

## NEXGEN's Side-Eject vs. Conventional End-Eject Balers

Step	NEXGEN Side-Eject	Conventional End-Eject
1	Feed Material	Insert front end of wire ties
2	Fill until "bale made" signal	Feed Material
3	Insert wire and tie off	Fill until "bale made" signal
4	Depress "home" button	Insert rear end of wire ties
5	Open door	Walk behind to tie bale
6	Eject bale w/eject switch	Feed front wire ties for next bale
7	Lift bale with forklift	Open door
8	Retract server island	Engage "flag pole" gauge
9	Close door and repeat	Feed next bale to push out bale
10		Retract "flag pole"
11		Extract wedged bale from chamber
12		Lift bale with forklift, etc.
13		Clean up spillage
14		Adjust wire on loose bale
15		Close door and repeat

**6  
Less  
Steps**

### Exclusive Front Bale Tie-Off System

NEXGEN's side-eject balers feature a specially designed wire guide system that allows the operator to quickly direct tie wires around the bale from the front of the baler. This eliminates the need to go behind the baler and loosen hanging wires that drag as bale is made.

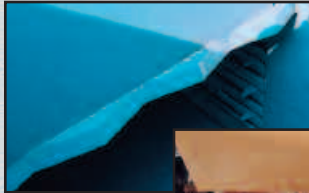
\* U.S. Patent No. 5,247,880 and others pending



# Other Standard Features: A complete Recycling System for Your Heavy Duty Application!

## Built to Endure

Extra deep, structural member bale chamber sides—2.5 times as strong as most other balers. Other heavy duty features include: 3/8" charge chamber sides and 1/2" floor.



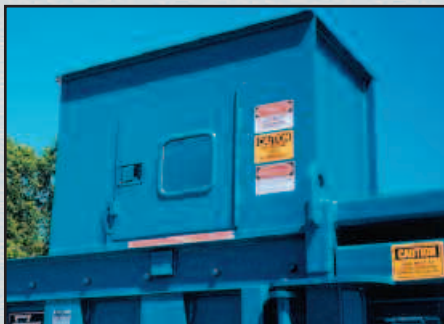
## Bolt-On Shear Blades,

which are adjustable and replaceable, cut material as bale is made and minimize the problems associated with irregular bales, which are difficult to stack and tie off.



## Spring Loaded Retainer Dogs

are located on each side of the bale chamber to produce superior springback control of materials being processed.



## Chute Feed Hopper with Inspection Door and Interlock Switch

will accommodate pneumatic, gravity, or conveyor feeding systems.

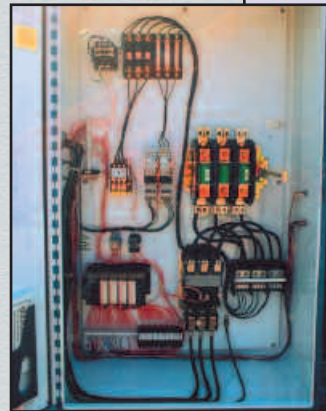


## Hydraulic Door Latch

standard on all models except the 620-E.

## Programmable Controller

customizes operation and eliminates relays and timers that can cause maintenance problems. Each electrical component is UL and CSA listed.



## Advanced Power Pack Design

Marathon's Power Pack with hydraulic oil has all the valves contained in a single manifold to minimize the number of hose connections. To further improve the hydraulic system, Nexgen uses hydraulic connections with "O" ring fittings that prevent leaks.



## NEXGEN Patented Automatic Side Ejection Features Push Button Ease

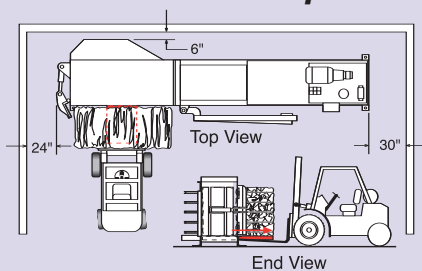
### How it works:

Pressure is relieved from the bale in three directions to achieve positive and complete bale ejection from the chamber.

This advanced method of bale ejection begins by activating the "Home Button" which causes the platen to retract to a pre-set location relieving **end force** on the bale. The operator then opens the chamber door which relieves **side force** and automatically unlocks the hinged upper section of the chamber to relieve **vertical force** on the bale.

With pressure on the bale effectively relieved from all directions, a hydraulic powered **Server Island**, located on the floor of the bale chamber, pushes the bale out of the chamber, quickly and completely. The **server island** functions as a pallet, eliminating costly construction of permanent guide islands. After the bale is removed with a forklift or pallet jack, the **server island** is retracted—saving valuable space.

## Save Valuable Space



Install the NEXGEN Side-Eject Baler up against a wall or in a tight space. Minimal floor space is needed for operation due to NEXGEN's unique Front baler Tie-Off and Side-Eject design.

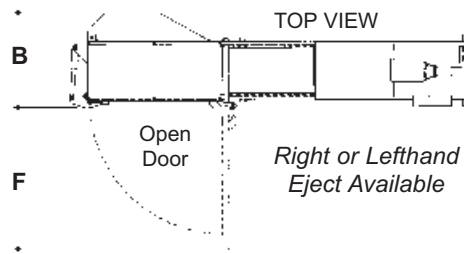
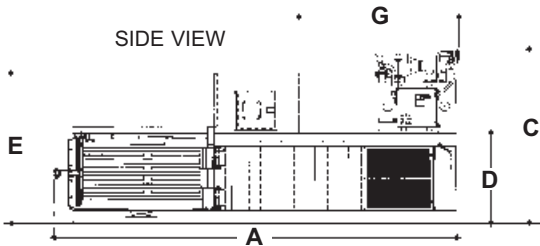
**Other Standard Features:** Lower Photo Cell • Power On Light • Bale Made Light • Hydraulic Oil • 460 Volt • Power Disconnect Switch • Center Position Valve • 10 Micron Return Line Filter • 100 Mesh Suction Line Strainer • Blue Color • Key Operated Start, On/Off Switch • Audio/Visual Start-Up Alarm • Left or Right Bale Eject • Oil Cooler (standard on 30 HP models) • 400BHN Abrasion resistant floor plates & ram bottom liner plates.



# Specifications NEXGEN Side-Eject Horizontal Balers

Model	SE-504842-830	SE-504242-830	SE-503042-830	SE-503042-720	SE-503042-620-E
<b>Bale Length</b> <i>(Optional Lengths Available)</i>	72" 1829mm	72" 1829mm	72" 1829mm	72" 1829mm	72" 1829mm
<b>Bale Width x Height</b>	48"x42" 1219mm x 1067mm	42"x42" 1067mm x 1067mm	30"x42" 762mm x 1067mm	30"x42" 762mm x 1067mm	30"x42" 762mm x 1067mm
<b>Clear Top Opening</b>	50"L x 46"W 1270mm x 1168mm	50"L x 40"W 1270mm x 1016mm	50"L x 28"W 1270mm x 711mm	50"L x 28"W 1270mm x 711mm	50"L x 28"W 1270mm x 711mm
<b>Bale Weight (OCC)</b>	1800 - 2000 lbs. 817 - 907 kg	1600 - 1800 lbs. 726 - 817 kg	1300 - 1500 lbs. 590 - 680 kg	1200 - 1400 lbs. 544 - 635 kg	1100 - 1300 lbs. 499 - 590 kg
<b>Wire Ties (OCC) Quantity / Gauge / Length</b>	5 @ 11ga. - 21 ft.	5 @ 11ga. - 20 ft.	5 @ 11ga. - 18 ft.	5 @ 12ga. - 18 ft.	5 @ 12ga. 18 ft.
<b>Performance</b>					
<b>Cycle Time (empty)</b>	20 sec.	20 sec.	20 sec.	22 sec.	41 sec.
<b>Platen Force</b>	125,700 lbs. 559.14 kN	125,700 lbs. 559.14 kN	125,700 lbs. 559.14 kN	96,200 lbs. 427.92 kN	70,700 lbs. 314.49 kN
<b>Platen Pressure</b>	63.9 psi 440.6 kPa	73.0 psi 503.3 kPa	102.2 psi 704.7 kPa	78.2 psi 539.2 kPa	57.5 psi 396.5 kPa
<b>Penetration</b>	16" 406mm	16" 406mm	16" 406mm	16" 406mm	16" 406mm
<b>Hydraulic/Electric</b>					
<b>Motor</b>	30 hp 22.4 kW	30 hp 22.4 kW	30 hp 22.4 kW	20 hp 14.9 kW	20 hp 14.9 kW
<b>Pump</b>	75 gpm 283.9 lit/min	75 gpm 283.9 lit/min	75 gpm 283.9 lit/min	49 gpm 185.5 lit/min	18.5 gpm 70.0 lit/min
<b>Operating Pressure</b>	2500 psi 172 bar	2500 psi 172 bar	2500 psi 172 bar	2500 psi 172 bar	2500 psi 172 bar
<b>Cylinder - Bore / Rod</b>	8" x 4.5" 203mm x 114mm	8" x 4.5" 203mm x 114mm	8" x 4.5" 203mm x 114mm	7" x 4.5" 178mm x 114mm	6" x 4" 152mm x 102mm
<b>Cylinder Stroke</b>	68" 1727mm	68" 1727mm	68" 1727mm	68" 1727mm	68" 1727mm
<b>Reservoir</b>	150 gal. 568 lit.	150 gal. 568 lit.	150 gal. 568 lit.	150 gal. 568 lit.	55 gal. 208 lit.
<b>Pump Type</b>	Vane	Vane	Vane	Vane	Gear
<b>Weight</b>	18,700 lbs. 8482 kg	17,700 lbs. 8029 kg	15,200 lbs. 6895 kg	15,000 lbs. 6804 kg	12,400 lbs. 5625 kg

Dimensions	A	B	C	D	E	F	G
SE-504842-830	20'-10" (6350mm)	77" (1956mm)	105" (2667mm)	55" (1397mm)	92" (2337mm)	86" (2184mm)	97" (2464mm)
SE-504242-830	20'-10" (6350mm)	71" (1803mm)	105" (2667mm)	55" (1397mm)	92" (2337mm)	86" (2184mm)	97" (2464mm)
SE-503042-830	20'-10" (6350mm)	59" (1499mm)	105" (2667mm)	55" (1397mm)	92" (2337mm)	86" (2184mm)	97" (2464mm)
SE-503042-720	20'-10" (6350mm)	59" (1499mm)	105" (2667mm)	55" (1397mm)	92" (2337mm)	86" (2184mm)	97" (2464mm)
SE-503042-620-E	20'-10" (6350mm)	59" (1499mm)	88" (2235mm)	55" (1397mm)	92" (2337mm)	86" (2184mm)	97" (2464mm)



### Material Thicknesses

- Ram Face: 1/2" PL w/1" bars (3/8" on 620-E)
- Ram Bottom: 1/2" (3/8" on 620-E)
- Liner Plate: 3/8"
- Ram Top: 3/8"
- Floor: 1/2" (3/8" on 620-E)
- Bale Chamber Sides: 3/8" (1/4" on 620-E)
- Charge Chamber Sides: 3/8"

### Options

- Cart Dumper System
- Carts
- Tongue & Groove Floor/Ram
- Conveyor Stop Control
- Bale Wire
- Material Selector Switch
- No Front Tie-Off
- Secondary Control Station with Lock-out
- Remote Power Pack
- Accessory Control Options
- Remote Control Station
- Special Paint
- Oil Cooler (std on 30hp models)
- Immersion Oil Heater
- Oil Temp. Shut Down
- Low Oil Shut Down
- 60" Feed Opening
- Ground Feed Hopper with Extra Stop Switch
- 208/230 & 575 Volt
- Sonic Sensor
- Upper Photo Cell

Visit us on-line at: [www.NEXGENbalers.com](http://www.NEXGENbalers.com)



P.O. Box 1798  
Vernon, AL 35592-1798 USA  
(205) 695-9105 • fax (205) 695-7250  
**1-800-633-8974**

Pictures in this literature are illustrative only. Specifications are subject to change without notice in order to accommodate improvements to the equipment. Certified in compliance with ANSI Regulation Z245.5 and all OSHA standards. Products must be used with safe practice and in accordance with said regulations and standards.

